



BEAMAN · CONRAD · DIKE · GRUNDY CENTER · HOLLAND · MORRISON · REINBECK · STOUT · WELLSBURG

GRUNDY COUNTY

FREE

2024

VISITOR'S GUIDE



WWW.BUTLERGRUNDY.COM



GRUNDY COUNTY FAIR



GRUNDY COUNTY FAIR 4H/FFA SHOWS JULY 15-20, 2024



Monday, 7/15

8am-12pm Static Judging

Tuesday, 7/16

2:00pm Pet Show

3:00pm Horse Show-halter/trail

4:00pm Communications & Fashion Show

Wednesday, 7/17

8:00am Rabbit Show

1:00pm Dairy Goat Show

3:30pm Horse Show-games

7:00pm Family Fun Night, King & Queen Announcement

Thursday, 7/18

8:00am Poultry Show

10:00am Livestock Judging

Kids Korner Fun-1:00pm Storytime

1pm Face Painting

2:00pm Magician/Balloon Animals

Laser Tag/Water Inflatables

3:30pm Meat Goat Show

5:00pm Sheep Show

Friday, 7/19

8:00am Swine Show

11:00am Dog Show

2:00pm Bucket Calf Show

3:30 No Fit Beef Show

Saturday, 7/20

8:00am Beef Show



www.GrundyCountyFair.com



WELCOME TO GRUNDY COUNTY!

THE GRUNDY COUNTY
VISITOR GUIDE WAS
PRODUCED BY
THE GRUNDY REGISTER,
A DIVISION OF
MID-AMERICA
PUBLISHING, IN
ASSOCIATION WITH
THE BUTLER-GRUNDY
DEVELOPMENT ALLIANCE.

EDITOR
JOHN JENSEN

EDITORIAL
CONTENT
AND PHOTOS
C.J. EILERS
JEFF KOLB
KEVIN WILLIAMS
DIANE PAIGE
AMY CLEVELAND

Welcome to Grundy County, and the Cedar Valley Region of Iowa!

The communities in Grundy County offer a variety of events, attractions, and recreational opportunities for you and your family. From small town festivals to the All American Fair, Grundy County welcomes you to experience all that we have to offer. All across the county, from our downtown districts, or down our rural roads, you will find unique shopping with boutiques, and shops offering one of a kind locally made treasures. Take a break for

lunch or dinner and enjoy true hometown hospitality in our restaurants and coffee shops.

If the art of quilt making interests you, Grundy County is a perfect destination. The Barn Quilt Loop is a self-guided driving tour that features dozens of large patchwork quilt blocks that have been painted on the sides of barns and other farm buildings all across the county. The Barn Quilts of Grundy County was started in 2003 to highlight the agricultural heritage of Grundy County, as well as the important folk art of quilting. A map and list of the quilt locations can be found here in this guide.

We invite you to make Grundy County your home!

Our businesses have a wide range of career opportunities, while our communities offer you the safety and security of rural living, along with more affordable housing options, all while only minutes away from all that the larger cities of Waterloo/Cedar Falls and Marshalltown have to offer.

We are only a phone call or email away if you need any assistance with planning your visit, or need relocation information. Feel free to contact our office at (319) 267-2858 or send an email to info@butlergrundy.com.

*Jeff Kolb
Executive Director
Butler-Grundy
Development Alliance*



TABLE OF CONTENTS

EXPLORE

Barn Quilts5-7
Calendar of Events.....8
Festivals & Events9
Grundy County Fair.....10-11

VISIT

Beaman 12
Conrad 13
Dike 14-16
Grundy Center 17-18
Holland 19
Morrison 19
Reinbeck.....20
Stout.....21
Wellsburg22

ENJOY

Let's Go Camping24-25
County Parks26-27
Area Recreation28-29
Libraries.....29
Golf Courses30





TAKE A TOUR

GRUNDY COUNTY BARN QUILTS

The Barn Quilts of Grundy County is a unique form of public art that draws visitors from all over the state - and beyond - into the heart of Grundy County.

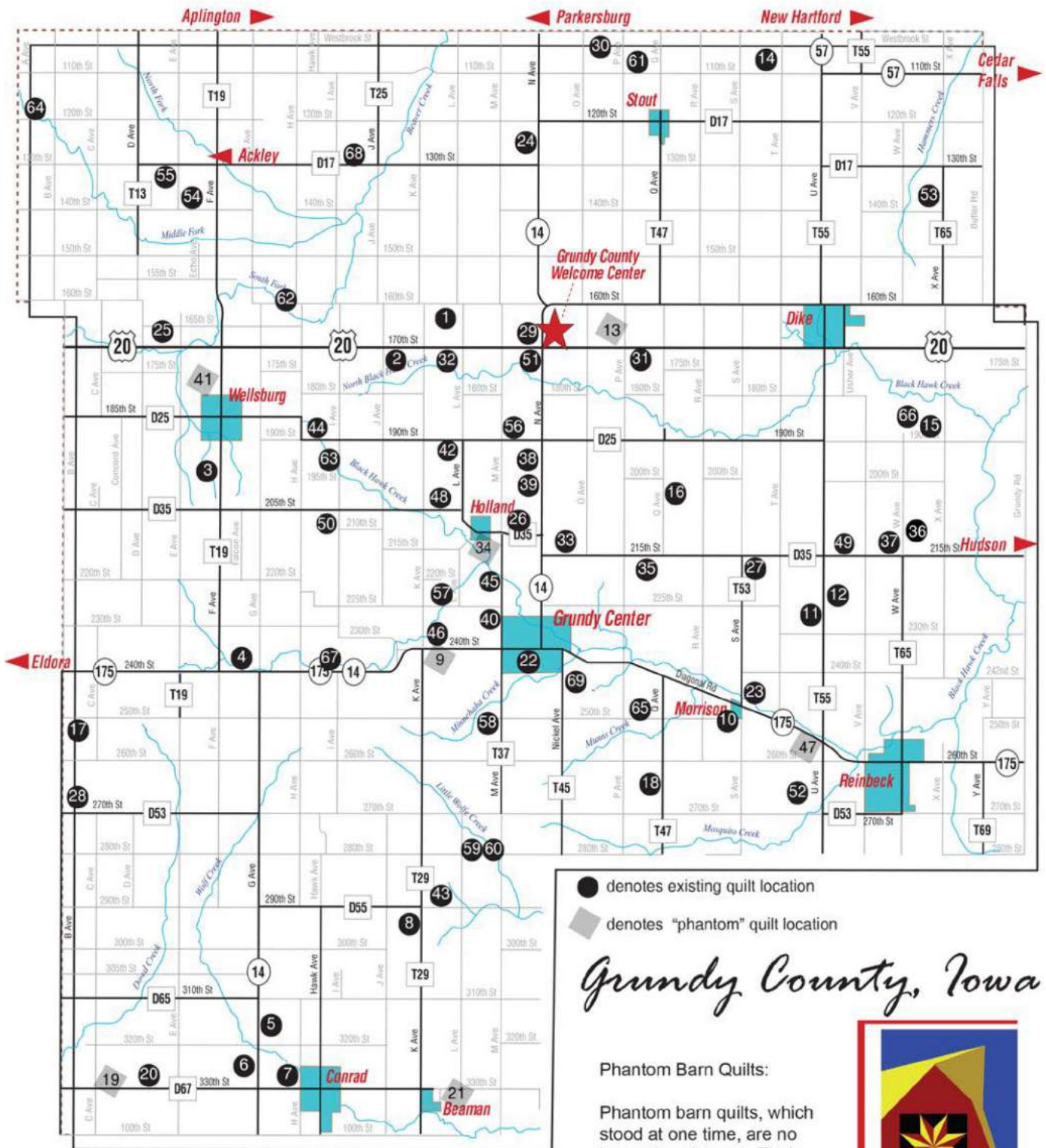
Designed to highlight the rural, agricultural heritage of Grundy County, as well as the important folk art of quilting, the Barn Quilt Loop features large patchwork quilt blocks that have been painted onto the sides of barns and other farm buildings in the area.

As you travel along the 64-mile Barn Quilt Loop, you will be delighted by dozens of colorful quilt patterns that are

spread across the rural areas and in the towns of Wellsburg, Conrad, Beaman, Grundy Center, Morrison, Reinbeck and Dike.

Over the past few years, the Barn Quilts of Grundy County have grown into a unique attraction that has drawn visitors from all over the country to see the quilt blocks, shop in the county's many specialty and gift shops, enjoy a meal at one of several locally-owned restaurants, and just generally have a pleasant time here in Grundy County, home of the Original Iowa Barn Quilts.

BARN QUILT LOCATIONS



For more information, go to www.grundycountyiowa.com!



5. Windmill	31704 G Ave.	Conrad	43. Mill Wheel	20031 290th St.	Beaman
6. Hole in the Barn Door	32191 G Ave.	Conrad	44. Rolling Pin	17309 190th St.	Wellsburg
7. Schoolhouse	32889 H Ave.	Conrad	45. Shoemakers Puzzle	22033 M Ave.	Grundy Ctr.
8. County Fair	29131 K Ave.	Beaman	46. Garden Gazebo	23308 K Ave.	Grundy Ctr.
9. Corn & Beans	20254 240th St.	Grundy Ctr. ♦	47. Mosaic Patch	29514 Diagonal Rd.	Reinbeck ♦
10. Bear Paw	204 4th St.	Morrison	48. Jack in the Pulpit	20601 205th St.	Holland
11. LeMoyne Star	22367 U Ave.	Reinbeck	49. Firewheel	30309 215th St.	Reinbeck
12. Twisted Log Cabin	22128 U Ave.	Reinbeck	50. Morning	17752 205th St.	Grundy Ctr.
13. State Fair	16421 P Ave.	Dike ♦	51. Whirlwind	22803 170th St.	Holland
14. Next Door Neighbor	10653 T Ave.	New Hartford	52. Turkey Tracks	26593 U Ave.	Reinbeck
15. Gentleman's Fancy	32605 190th St.	Hudson	53. Prairie Queen	13725 X Ave.	Cedar Falls
16. Maple Leaf	20420 Q Ave.	Grundy Ctr.	54. Prairie Flower	14623 140th St.	Wellsburg
17. Snail's Trail	11712 250th St.	Eldora	55. Fox & Geese	13982 130th St.	Wellsburg
18. Dutchman's Puzzle	25601 Q Ave.	Grundy Ctr. ♦	56. Kentucky Chain	22245 190th St.	Holland
19. Variable Star	12719 330th St.	Conrad ♦	57. Farmer's Daughter	20163 225th St.	Grundy Ctr.
20. Card Trick	13811 330th St.	Conrad	58. County Fair Variation	25035 M Ave.	Grundy Ctr.
21. Arrowheads	Beckman St.	Beaman ♦	59. Rail Fence	21563 280th St.	Grundy Ctr.
22. Goose Tracks	1206 L Ave.	Grundy Ctr.	60. Bed of Stars	21563 280th St.	Grundy Ctr.
23. Bachelors Puzzle	24345 S Ave.	Reinbeck	61. Grandmother's Choice	25609 110th St.	Parkersburg
24. Friendship Star	12395 N Ave.	Parkersburg	62. The Barn	16672 160th St.	Wellsburg
25. Crossed Canoes	13209 165th St.	Wellsburg	63. End of the Day	19789 I Ave.	Wellsburg
26. Old Maid's Puzzle	20956 M Ave.	Holland	64. Destination	10813 120th St.	Ackley
27. Grandmother's Fan	21548 S Ave.	Reinbeck ♦	65. Black Spruce	25577 250th St.	Grundy Ctr.
28. Birds Nest	11921 270th St.	Conrad	66. Grandmother's Cross	18848 W Ave.	Reinbeck
29. Hens & Chicks	16319 N Ave.	Holland	67. Christmas Tree	17467 240th St.	Grundy Ctr.
30. Northwind	10433 P Ave.	Parkersburg	68. Streak of Lightning	18665 130th St.	Aplington
31. Iowa Star	25186 170th St.	Dike	69. Eight Point Star	25228 Nickel Ave.	Grundy Ctr.
32. Cat's Cradle	19704 170th St.	Holland			
33. Courthouse Steps	23485 215th St.	Grundy Ctr.			
34. Sawtooth Star	101 Market St.	Holland ♦			
35. Country Roads	25058 215th St.	Grundy Ctr.			
36. Goose on the Pond	20744 W Ave.	Reinbeck			
37. Flying Geese	31685 215th St.	Reinbeck			
38. Contrary Husband	19605 N Ave.	Holland			

♦ - Phantom
 ♦ - Being restored



**703 F AVENUE, SUITE 1,
 GRUNDY CENTER, IA 50638
 (319) 824-6979**

**ISU EXTENSION OFFICE HOURS ARE
 MONDAY - FRIDAY 8 A.M. - 4:30 P.M.**

2024 CALENDAR OF EVENTS

March 7-9.....	Spring Open Houses	Grundy Center	(319)825-6742
March 23.....	Easter Eggstravaganza.....	Conrad.....	(614)366-2108
March 28-30.....	Easter Eggstravaganza.....	Grundy Center	(319)825-6742
April 12-13.....	Citywide Garage Sales.....	Wellsburg.....	(641)869-3721
April 24	Girls Night Out	Conrad.....	(641)366-2108
April 27	ABCD Citywide Garage Sales	Conrad & Beaman	(641)366-2108
May 4	Citywide Garage Sales	Dike	(319)989-2291
May 25-26.....	Memorial Weekend Festival.....	Beaman	(641)366-2894
June 6	Summer Block Party	Grundy Center	(319) 825-6742
June 7-8.....	Black Dirt Days	Conrad.....	(641) 366-2165
June 8	Figure 8 Races.....	Grundy Center	Online
June 8-11	Wellsburg Daze.....	Wellsburg.....	(641) 869-3721
June 14	CMS Golf Tournament.....	Grundy Center	(319)825-6742
June 28-29	City-Wide Garage Sales.....	Grundy Center	(319) 825-3565
July 4	4th of July Celebration.....	Reinbeck	(319) 788-6404
July 11-13	Felix Grundy Festival.....	Grundy Center	(319) 825-6742
July 15-20.....	Grundy County Fair.....	Grundy Center	Online
July 19.....	Figure 8 Races (fairgrounds).....	Grundy Center	Online tix
August 10	Watermelon Days	Dike	(319) 989-2291
August 8	Back To School Bash.....	Grundy Center	(319) 825-6742
September 14	Pioneer Craft Fair	Morrison.....	(319) 345-2688
September 19-21	Fall Open Houses	Grundy Center	(319) 825-6742
September 21	Reinbeck Art Festival	Reinbeck	(319) 788-6404
October 10.....	Quilt Show	Grundy Center	(319) 239-9955
October 10.....	Girls Night Out	Grundy Center	(319) 825-6742
October TBD.....	Pumpkin Fest.....	Conrad.....	(641) 366-2108
October 26	Business Boo and Kid/Pet Parade	Grundy Center	(319) 825-6742
November 8-9	Holiday Open Houses.....	Grundy Center	(319) 825-6742
November 8-9	Miracle on Main.....	Reinbeck	(319) 788-6404
November 22	Pink Friday	Grundy Center	(319) 825-6742
November 29	Main Street Mingle	Grundy Center	(319) 825-6742
November 30	Small Business Saturday.....	Shop Your Local Community	
December 4.....	Razzle Dazzle.....	Dike	(319) 989-2291
December 7.....	Christmas Tree Fest.....	Wellsburg.....	(641) 869-5031
December 7.....	Christmas in Conrad.....	Conrad.....	(641) 366-2108



WATERMELON DAY, DIKE



BLACK DIRT DAYS, CONRAD



FELIX GRUNDY CARNIVAL

FESTIVALS AND EVENTS

Grundy County residents love to get out and celebrate, and there's no better place to do that than at local festivals and events. No fewer than six communities in Grundy County host summer celebrations where residents young and old gather to renew old friendships and make new ones.

Beman's Memorial Day

Celebration kicks off festival season in late May and is followed by festivals in Conrad and Wellsburg in June, Stout Freedom Fest, Reinbeck, and Grundy Center, in July and Dike in early August.

Each annual festival features a large parade while many are built around former residents returning for

class reunions. Most also feature musical entertainment from local and regional artists. Festivals in Conrad, Dike and Reinbeck are also capped by fireworks displays.

In addition, the Grundy County Museum in Morrison hosts the Pioneer Craft Fair the second Sunday of September each year. This

event features displays and demonstrations of life the way it was when Grundy County was founded in the 1850s.

Holiday celebrations are also held each year between Thanksgiving and Christmas in Conrad, Dike, Grundy Center and Reinbeck.



EXPERIENCE THE GRUNDY COUNTY FAIR

Grundy County is proud to be one of both the State of Iowa and the nation's top agricultural counties. One of the ways it celebrates its agricultural heritage each year is the Grundy County Fair. The Fair features programs for both Grundy County 4-H and FFA youth, as well as events and activities that the entire family can enjoy.

The 2024 fair is scheduled for July 15 to 20 at the Fairgrounds in the southeast corner of Grundy Center. Major grandstand events include coronation of the Queen and King, Family Fun Night, and a fireworks show. Throughout the remainder of the week, there will be events such as the old school Figure 8 races, rodeo, demo derby, trailer

race, mud volleyball, bean bag tournament, BBQ cook off, and more. Visit the Fair for safe, family fun for all at our All-American Grundy County Fair! Also, visit the Grundy County Speedway for nightly events followed by free concerts located at our new 1851 Pavilion during Thursday-Saturday of fair week along with special events through-

out the year. We also have a beautiful new campground called Fair View Campground, located directly west of the Speedway. Contact us for camping or event venue rental. The 1851 Pavilion or Alumni Building both make for beautiful wedding reception venues. Complete fair information can be found at www.grundycountyfair.com.

Konken


Since 1973
Farm, Residential, Commercial



GRUNDY CENTER 319-824-3150
DIKE 319-989-2155
REINBECK 319-788-3150



Grundy County REC

A Touchstone Energy® Cooperative 

303 North Park Avenue,
Grundy Center

319-824-5251

Hours: Mon.-Fri. 8 a.m.-3:30 p.m.

GNB Bank is focused on serving the people of our communities while providing full service banking that helps you take care of today, plan for tomorrow, and dream for the future.

Stop by or visit us at
gnbbank.com



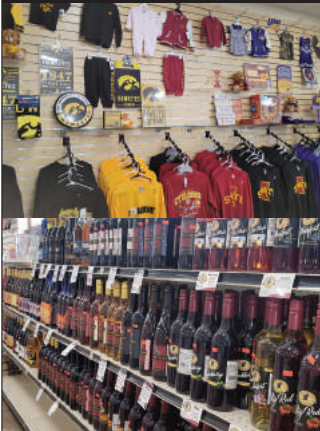
EXPANDING FINANCIAL HORIZONS
Member FDIC

103 E Center Street ■ Conrad
529 G Avenue ■ Grundy Center



THE MILL

CONVENIENCE STORE



ENJOY DINING
IN OR CARRY OUT

Hwy 14 & Hwy 20
The Mill and Arby's
319-824-2728
Godfather's Pizza
319-824-3702

BP Fuel | Gift Store
Mini Grocery Store | Trucker Supplies



Retail with a mission

1609 G Avenue
Grundy Center IA 50638
319-825-8030

Beaman is a small but mighty community of 183 residents located about 12 miles southwest of Grundy Center, two miles east of Conrad and 16 miles northeast of Marshalltown in southern Grundy County at the intersection of county roads T-29 and D-67. It is known for its popular slogan: "You're not dreamin', you're in Beaman!"

What to do: The Comet/Wolf Creek trail, which starts in Conrad and runs all the way past Wolf Creek County

Park into Gladbrook, cuts through the heart of Beaman. The aforementioned county park is located about three miles east of town on 330th Street, a gravel road, and features camping (with a shelter house, electricity and water), bridges and hiking opportunities in a quiet area full of natural beauty.

Beaman hosts its town festival on Memorial Day weekend and is also home to a public library on Main Street.

BEAMAN

POPULATION: 161

FOUNDED: 1867 AS WADLOUP.
RENAMED BEAMAN IN 1875.

MOTTO:
YOU'RE NOT DREAMIN',
YOU'RE IN BEAMAN.

CITY WEBSITE:
CITYOFBEAMAN.COM

CITY HALL:
(641) 366-2894

WELCOME

You're not
dreamin'...

You're in

BEAMAN



Famous for its black dirt soil and fertile surrounding farmland, Conrad is a vibrant and progressive town of just over 1,100 residents situated in the panhandle of Grundy County about 15 miles southwest of Grundy Center, 13 miles north of Marshalltown and 20 miles southeast of Eldora just off of Highway 14. Conrad has been a Main Street Iowa community since 1993, and the downtown area underwent a façade renovation and revitalization project in 2013 and 2014. The city has made major progress on constructing a 50-lot housing development on the north side of town. Several new businesses have moved into the downtown area in the last few years, and buildings are still available for aspiring entrepreneurs looking to set up shop in a strong small town with a bold vision for the future."

What to do: Downtown Conrad offers a variety of shopping options and a state of the art public library built just over a decade ago. The Grundy County Freedom Rock was completed in 2016 at Gier Park across the street from the old fire station near the intersection of Main Street and Grundy Avenue, and the Comet/Wolf Creek Trail begins here before continuing east toward Beaman.

Conrad hosts Black Dirt Days each June with a host of live entertainment, inflatable fun and food stands for all ages. The Conrad Heritage Hall and Museum, located inside of city hall, is a shrine to the history of the community and contains a host of local artifacts.

BLACK DIRT DAYS



POPULATION: 1,093
 FOUNDED: 1880
 CITY WEBSITE:
 CONRAD.GOVOFFICE.COM
 CITY HALL:
 (641) 366-2300

**GET YOUR
 FIX IT ON!**

HOME EQUITY
 LINE OF CREDIT



We've fixed up our rates to offer you a HELOC Special. Our HELOC Special can give you the flexibility to make renovations to your home, take a vacation and so much more!

Apply online today at greenbeltbank.com or call you local home lender!



800-648-2544

GBB&T: NMLS# 446252



KYLE

KATIE

STEPH

KARISA

JESS

MELANIE

ANNA

Parkersburg
 NMLS# 483061

Iowa Falls
 NMLS# 1792267

Grundy Center
 NMLS# 1032523

Eldora
 NMLS# 1843887

Ackley
 NMLS# 1671274

Belmond
 NMLS# 1495203

Iowa Falls
 NMLS# 2025092

DIKE

WATERMELON DAY, DIKE

With its prime location along Highway 20, just 11 miles west of Cedar Falls and the construction boom at the Fox Ridge Golf Course development, Dike is Grundy County's fastest growing city, with just over 1,300 residents according to the most recent population estimate. Dike, however, is so much more than a bedroom community.

POPULATION: 1,304
FOUNDED: 1901
MOTTO:
A SLICE OF IOWA
CITY WEBSITE:
DIKEIA.COM
CITY HALL:
(319) 989-2291

What to do: The man-made Grundy County Lake on the south edge of town offers some of the best recreational opportunities around, with fishing, camping, boating and a trail for runners, walkers and cyclists. Check out the shops downtown, or if you're more into education, Visit the one-of-a-kind Heimann Saw Shop & Museum. Every August, Dike holds its town festival, Watermelon Day.

Heimann Saw Shop & Museum



603 Main Street, Dike, Iowa 50624
Mark Heimann
Chainsaw Collector
319-239-4813
heimannm55@gmail.com

Specializing in McCulloch Chain Saws
Interested in all brands and types



..... Mayor Sadie Six

Watermelon Days: August 10, 2024
Razzle Dazzle: December 4, 2024

540 Main Street
319-989-2291

Office Hours:
Monday-Friday

9:00 a.m. - 12:00 p.m.
1:00 p.m. - 4:30 p.m.

See website for more
community events

dikeia.com

GRUNDY CENTER

POPULATION: 2,796

FOUNDED: 1877

MOTTO:
LIVING THE GOOD LIFE

CITY WEBSITE:
GRUNDYCENTER.COM

CITY HALL:
(319) 825-6118

the **Y** FOR YOUTH DEVELOPMENT®
FOR HEALTHY LIVING
FOR SOCIAL RESPONSIBILITY

WHERE GREAT THINGS HAPPEN EVERYDAY

The Y brings families closer together,
encourages good health, fosters
connection through fitness, sports,
and fun and shared interests.

OPPORTUNITIES FOR ALL
At the YMCA, no one is turned away due to
the inability to pay. Stop by to find out more.

Grundy Family YMCA
blackhawkyymca.org | 319-825-6210



As its name indicates, Grundy Center sits right in the middle of Grundy County, and it's the most populated city as well as the county seat. With nearly 2,800 residents and a host of offerings including outdoor activities, live music, delicious eateries and boutique shopping, the community truly has something for everyone.

Spend an afternoon walking around the vibrant downtown district and check out some of the historic architecture as you peruse the local shops, take a break with a coffee or a bite to eat at one of several dining establishments, or catch a movie or do some bowling at night.

The Grundy County Courthouse, which is one of two Grundy County structures featured on the National Registry of Historic Places, dates back to the Romanesque Revival-era and recently celebrated its 125th anniversary. It features a gazebo that is used for concerts and other

What to do: Grundy Center hosts farmer's markets, concert series, and family friendly events during the summer months and is home to both Felix Grundy Days and the Grundy County Fair, which are both held in July. Grundy Center is proud of its history, and the recently renovated Herbert Quick Schoolhouse—dedicated to the late writer and Grundy County native—takes visitors on a tour of the building where he taught in the late 1800s. The Grundy Center Historical Society Museum at 610 Seventh Street is another great opportunity to learn more about the people and events that have shaped the town.

Like Conrad, Grundy Center is now a Main Street Community and a downtown façade renovation has brought a fresh new look to the historic area along G Avenue. In 2021, Grundy Center natives Matthew and Tara Bockes completed a renovation of the upper level of the former Frederick Furniture Building thanks to a state grant, creating four new apartments downtown. In addition, the Maroon and White Committee recently completed renovation of the former Upper Elementary building into the Grundy Center Preschool and Childcare Center for day-care and preschool in Grundy Center. Make plans to visit today!

NAPA

AUTO PARTS

NEW EXPANDED
LOCATION
SERVING
YOU BETTER

101 4th St., Grundy Center, IA
(319) 824-6917
Mon-Fri 8-5, Sat 8-12

HOLLAND

Though it may be small - with a population just under 300 - the town of Holland has outdoor entertainment in the Pioneer Trail and Holland Marsh to keep locals and visitors alike busy during the warmer months.

PIONEER TRAIL

Pioneer Trail: Once an active railroad bed that served as a vital link to the largely agricultural communities of Holland, Grundy Center, and Morrison, the Pioneer Trail stretches for 12 miles to connect these towns. With a surface of crushed and compacted limestone, the trail is perfect for outdoor recreation activities including: hiking, running and biking during the warmer months, and cross country skiing during the colder

months. Horseback riding is allowed along a mowed grass trail that parallels the limestone trail, while motorized vehicles and hunting are prohibited on the trail. Throughout the trail, there are eight conservation areas that are easily accessible to trail-goers. These include the Holland Marsh, Wolfe Family Preserve, Shearn Park, Grundy County Heritage Museum, Buckles Wildlife

Area, Gutknecht Park, Copley-Strohbehn Preserve, and the Reinbeck section of the Grundy County Greenbelt.

Holland Marsh: The Holland Marsh itself is a great way to spend an afternoon exploring nature. Spanning 46-acres, the wildlife area is open to small game and waterfowl hunting, and hunting of whitetail deer by bow is an option available by securing a permit from the local Conservation Board

POPULATION: 259
CITY HALL:
(319) 824-5131

(319-345-2688). Largely a grassland, the area also contains several wetlands and small winter cover plantings. Between the Pioneer Trail and Holland Marsh, you're sure to enjoy all of nature's treasures including wildlife and native vegetation in Holland.

MORRISON

Although it's the smallest incorporated community in Grundy County, Morrison, located along Highway 175 halfway between Grundy Center and Reinbeck, is known as the home of the Grundy County Heritage Center and a famous area restaurant.

POPULATION: 98
CITY HALL:
(319) 345-2812



GRUNDY COUNTY HERITAGE MUSEUM

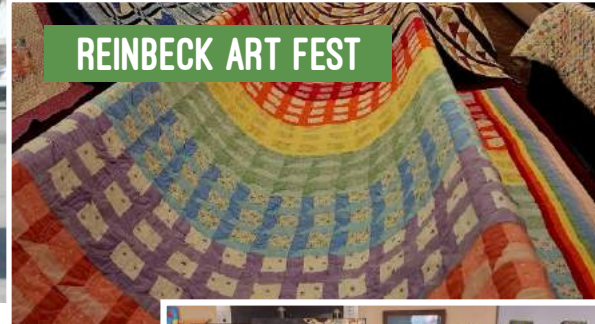
Grundy County Heritage Center: The Heritage Center is the hub of Grundy County history, and those who love the past will find everything dating back to the time that Native Americans lived here to the present.

The center recently added a 1900s-era barn and house constructed inside of the walls, and its interpretive exhibit, "From Grassland to Granaries," shows the evolution of Grundy County from its native prairie habitat to the modern row crop farmland it's famous for today.

On the same property, the Peck Log Cabin, which was the home of Grundy County's first European settler William Peck, takes visitors back to 1853 with furnishing based on the area.

The Grundy County Heritage Center is open year round from 8:30 a.m. to 4:30 p.m. on Tuesday, Wednesday and Thursday or by appointment. For more information, call (319) 345-2688.

Every fall on the second Sunday in September, the Heritage Center hosts the Pioneer Craft Fair featuring free events and lessons on the ways of the early settlers who came to Grundy County. Favorites include beekeeping, honey, flint knapping, spinning and weaving, crocheting, timber framing, gold prospecting, butter churning and fireplace stew.



As Grundy County's second-largest community, Reinbeck, located in the southeast corner of the county just 20 miles from the Waterloo/Cedar Falls area, is a hidden gem and the home of a growing downtown district with a variety of shops and restaurants, as well as a plethora of outdoor entertainment to keep visitors busy during any season. On top of that, you'll find a variety of public art around town, a quaint and walkable downtown area and beautiful city parks.

Elmwood Park offers fun for the whole family throughout the seasons, and it features a walking trail complete with 10-station exercise equipment. Strohbahn Park, located

just north of town, is a favorite for both locals and visitors alike. Black Hawk Creek runs through the park, and it's one of the best nature watching spots in all of Grundy County. The Reinbeck Greenbelt Area near Strohbahn Park is a 67-acre parcel of land with access to hunting (pheasants, rabbits and partridge), camping, fishing, archery, hiking, equestrian trails and snowmobiling.

Reinbeck hosts an annual art festival in September featuring local work, food trucks and live music, a fourth of July celebration with a parade, car show, fireman's dance and other family-friendly activities, and the annual "Miracle on Main" in November.

POPULATION: 1,662
 MOTTO:
 A PLACE TO GROW
 CITY WEBSITE:
 REINBECK.ORG
 CITY HALL:
 (319) 788-6404



The tiny town of Stout, located between Dike, New Hartford and Parkersburg, is full of small town charm and caring neighbors.

Though it may be small, the town celebrates in a big way with their annual Stout Freedom Fest in

early July.

Stout Freedom Fest: During the beginning of July, locals celebrate the annual Stout Freedom Fest with a weekend full of fun for people of all ages. To kick things off, the Church League's annual softball tournament takes place at

the newly renovated Stout Astrodome. Each year, the public shows out to the ball diamond to watch the tournament, and enjoy food, beverages and the famous Stout Stuffer banana split from the concession stand. For the youngsters, there are a number

of activities in the park, including a slip and slide, the Bill Riley Talent Show and more. The festivities wrap up with a spectacular fireworks show after dark.

POPULATION: 191

CITY HALL:
(319) 346-2763

STOUT



STOUT ASTRODOME



Welcome to Your Hometown Newspapers!

Serving you with more than 85 years of professional newspaper experience!

Local Coverage, Feature Stories and Great Sports • Special Supplements & Tabloids
Keeping Your Local Communities Connected • Newspaper & Online Advertising
Custom Printing • Marketing Solutions • Award winning newspapers, in print and Online

Read! Enjoy! Subscribe Today!

The Grundy Register office:
601 G Ave. PO Box 245,
Grundy Center, IA 50638-0245
Phone: (319) 824-6958
Fax: (800) 340-0805

To advertise with us, call Nikki:
at 563-864-3333 or email
sales@grundyregister.com



WELLSBURG



RENOVATED BANDSHELL

Wellsburg is a town of over 700 residents in north-west Grundy County just two miles south of Highway 20. In 2022 the community launched a capital campaign to modernize their parks, including a large inclusive playground that will become a destination for the entire region. The purpose-built playground will accommodate children with limited mobility, as well as

sensory, motor, and or intellectual disabilities. Project volunteers anticipate a 2024 opening.

Wellsburg has also become a Saturday shopping destination. The 523 Market features a unique mix of products from antiques to décor, locally baked treats and more from over 70 sellers. The Brick Bungalow is a longtime established gift and décor shop, and Legacy Ponds is a fun destination for outdoor water features and yard décor. The Wells Hotel is another popular experience.

The beautiful Wells Hotel

Museum features artifacts and memorabilia from Wellsburg's past. The museum is open June through August on Saturdays from 1 p.m. to 4 p.m. or anytime by appointment, as well as for special program events.

POPULATION: 720

**MOTTO:
PROUD OF OUR
HERITAGE**

**WEB SITE:
WELLSBURGIA.COM**

**CITY HALL:
(641) 869-3342**



All Inclusive Playground Rendering

Give yourself a gift!
Visit...
Brick Bungalow
Creations and gifts to warm your heart and home **641-869-5031**

Tenzi, Itzi, Slapzi Games **Crazy Aaron's Thinking Putty**

Lanterns & Much More

504 West 4th Street · Wellsburg · Iowa
Fri & Sat: 11 am-3 pm · Thurs: 11 am-5 pm
brickbungalowwellsburg.com

MUSEUMS



GRUNDY COUNTY HERITAGE MUSEUM 204 FOURTH ST, MORRISON

History: The Grundy County Heritage Museum began as an effort in 1977 to save the old Morrison Schoolhouse which had fallen into disrepair after its closure in 1953. The Grundy County Historical Society was contacted but had no interest in a museum outside of the county seat. So, a group formed for the restoration of the building and the support of a museum. This group became Historical Collections of Grundy County, a 501.3c nonprofit organization.

The brick building was leased from the City of Morrison and the many renovations began. The museum officially opened on March 15, 1979. Over the next 42 years, the 1853 William Peck log cabin was moved to the grounds and restored. The Colfax No.3 Schoolhouse, a one room country schoolhouse came a few years later. A Chicago and Northwestern Railroad caboose and motorcar were the next addition. And in 1999, the Heritage Museum and Agricultural Hall became the latest building in the complex.

The Museum recently added an Escape Room that is available by appointment. As of this writing, use of the Escape Room was free of charge. The Heritage Museum also features a meeting room available for rental.

The museum is open Tuesdays, Wednesdays and Thursdays from 8 a.m. to 4:30 p.m. and by appointment other times.

BEAMAN HERITAGE CENTER

The Heritage Center is located within the Beaman Public Library. It pays tribute to Beaman's history with artifacts and stories about the residents of this small town.

CONRAD HERITAGE HALL AND MUSEUM

Located inside City Hall in Conrad, the Conrad Heritage Hall and Museum features local artifacts and rotating exhibits and is a shrine to the history of the community.

HERBERT QUICK SCHOOLHOUSE

This one-room schoolhouse was where Iowa author Herbert Quick received his early education. The schoolhouse was relocated from its original location to Orion Park in Grundy Center in 1933. The Schoolhouse is owned by the City of Grundy Center and supported by the Grundy Center Historical Society.

WELLS HOTEL MUSEUM

Located in Wellsburg, the Hotel Museum features artifacts and memorials from Wellsburg's past. Open June through August on Saturdays from 1 to 4 p.m.

THE 1900 FARMHOUSE

The farmhouse is modeled after a typical farm home in the 1890 to 1900 time period. The back porch door was chosen for the entry into the exhibit because it was this entrance into the house that was the most traveled by the family during the daily activities.

The typical day in the farm family's life started quite early in the morning with the wife and her daughters preparing breakfast and the husband and his sons tending to the livestock chores. Following the chores, it was time to enjoy the breakfast. The kitchen looked like this in the winter season. Another structure near the back door would have been the "summer kitchen." Summer kitchens were common structures in the late 19th century. They served a variety of purposes. In the summer months, all the cooking and baking, as well as the laundry, was done there. This was to keep the house cooler. The summer kitchen was also where all the canning and the preserving of the garden produce was done.

GRUNDY COUNTY CONSERVATION BOARD

The Grundy County Conservation Board is in charge of parks, preserves, recreational centers and wildlife and conservation areas throughout the county. The

Board manages a total of 19 areas, including parks, wildlife areas, prairie remnant areas and a museum.

The mission of the Grundy County Conservation

Board is to enhance the quality of all life in the county by preserving, acquiring and wisely managing our cultural and natural resources, by providing

recreational and leisure opportunities, and by educating the citizens to be wise and well informed stewards of the environment.

Grundy County is home to three campgrounds with the addition of the new site at the fairground in Grundy Center. The popular Grundy County Lake site near Dike and the Wolf Creek County Park east of Beaman are still here and better than ever.

Whether you're looking for a short-term place to crash on your outdoor adventure or you're planning to stay for awhile, Grundy County has a site for you. At the lake in Dike, you'll enjoy easy access to Highway 20, fishing, hiking, boating, the charms of downtown Dike just down the road and the close proximity to the Waterloo-Cedar Falls metropolitan area.

In Grundy Center, you'll be just a hop and a skip away from the community's vibrant downtown and restaurant scene as well as a hospital, an aquatic center, a recre-

ational trail and other tourist attractions. And be sure to come to town for the annual county fair in July, which is growing and expanding like never before under the leadership of an aggressive and motivated fair board.

And last but not least, the site east of Beaman along the southern border of the county may be off the beaten path (you'll have to take gravel to get there), but it's a hidden gem worth searching for. Enjoy a pristine natural woods setting with a recreational trail running through the park, and head east toward Gladbrook or back west to Beaman and Conrad on the Comet/Wolf Creek Trail. If you have questions regarding accommodations or you're just ready to camp, call the Grundy County Conservation office in Morrison at (319) 345-2688.



GRUNDY COUNTY LAKE CAMPGROUND

LET'S GO CAMPING

WOLF CREEK RECREATION AREA

33999 M AVE
BEAMAN, IA 50609

Two miles east of Beaman, IA on 330th St and then one mile south on M Ave

History: This area was purchased by the county in the early 1970s and developed for camping, picnicking, hunting, and other recreational uses. It is a 93-acre multi-purpose recreation area and boasts

native Bur Oak forested areas and reconstructed prairie areas. New to the area within the past year is a six-hole disc golf course.

Facilities available include a shelter house, picnic tables, grills, a pit latrine toilet and a modern shower/restroom building designed in the private room concept.

The park is connected to the Comet trail, a crushed limestone-surfaced recreational trail. Of special

interest is the 60-foot suspension bridge on this connecting trail. The Comet Trail connects the towns of Beaman, Conrad, and Gladbrook with the park.

There are a total of 22 designated camping sites - 15 camp sites have electricity available and 11 do not. There are also tent and group primitive camping areas. Camping fees are \$20 per night per unit for those camping in a designated camp site

with electricity available, \$10.00 for any other site. Non-profit youth groups are allowed to camp for free in the primitive camping area.

The shelter house is available for advance reservations by calling the conservation board offices. An application form is available and the cost to reserve the shelter is \$20.00 per 5 hour period.

CONTINUED ON PAGE 22



WOLF CREEK PLAYGROUND

CONTINUED FROM PAGE 21

FAIRVIEW CAMPGROUNDS
 1308 4TH ST,
 GRUNDY CENTER, IA 50638

Located at Grundy County Fairgrounds

About: Thirty-site campground located northeast of the Grundy County Speedway at the Grundy County Fairgrounds that opened in 2019. Sites feature water and power hookups with some also featuring sewer hookups.

For more information, see the Grundy County Fair Web site, www.grundycountyfair.com.

GRUNDY COUNTY LAKE & PARK
 JUST SOUTH OFF OF
 HIGHWAY 20 EXIT 215 AT
 THE SOUTHWEST CORNER
 OF DIKE

History: This area is Grundy County's largest multi-use recreation area. The 40-acre lake was created by the Iowa Department of Transportation (IDOT) when borrow material was needed for the Highway 20 construction. The lake site was transferred to Grundy County in August, 2002. Additional property was purchased from the IDOT using Resource Enhancement and Protection (REAP) grant

funds making the total area 255-acres. The park officially opened to the public in July, 2003.

Anglers enjoy the boat ramp, kayak launcher, rock fishing jetties and accessible fishing platform. The lake contains largemouth bass, bluegill, crappie, perch, walleye, and channel catfish.

A 60-site modern campground contains large, level camping pads – both back-in and pull-through sites. Camping fees are \$20 per night for all sites. The shower/restroom building was designed with the private

family concept providing users six modern rooms.

Bicyclers and hikers enjoy the hard-surfaced trail around the lake that also connects to the campground and the City of Dike recreational facilities. There are two open air shelter houses, a gazebo, and ample stationary and swinging style benches.

Hunting/habitat: The park area includes over 40 acres of reconstructed prairie area, wetlands, and reforested areas. Hunters harvest pheasants, rabbits, waterfowl and deer.



GRUNDY COUNTY FAIRGROUNDS PLAYGROUND



COUNTY PARKS

BEAMAN ARBORETUM 33245 KING AVE, BEAMAN

Follow 330th Street east of Beaman to King Avenue, then turn south.

About the Park: This five-acre arboretum was plant-ed by Ellis Lepley in 1934 on school property and is an early example of an outdoor classroom. The area adjoins the BCLUW High School baseball field and accessed from that school property (off Beckman Street in Beaman) or from 33235 King Avenue. The wide variety of mature oaks and maples planted there form a lovely canopy for trail users.

BEAVER ROADSIDE PARK 15825 N AVE (HIGHWAY 14), BETWEEN GRUNDY CENTER AND PARKERS- BURG

Follow N Avenue (HWY 14) approximately 7.5 miles north of Grundy Center, just past the interchange with HWY 20. Park is on west side of road.

About the Park: This highway rest stop is located near the junction of Highway 14 and Highway 20, across from the Grundy County Welcome Center. This one-acre rest area has picnic tables, an open shelter, grills and a pit-style toilet with handicapped ac-

cessibility.

There is also a short grass hiking trail if you need to stretch your legs from your travels.

BLACK HAWK WILDLIFE AREA 24433 S AVE (T-53), ONE- HALF MILE NORTH OF MORRISON

In Morrison, turn north on S Avenue. Park is on westside of road.

About the Park: A 53-acre park featuring an outdoor classroom for environmental education as well as wildlife habitat, hiking, hunting for pheasants, rabbits and partridge, and

fishing in the Black Hawk Creek. Facilities include hiking and self-guided nature trails (with a suspension bridge across Black Hawk Creek) and toilets.

BUCKLES WILDLIFE AREA 25005 T AVE , BETWEEN REINBECK AND MORRISON

Travel one mile east of Morrison on Highway 175, then turn north about 1/4 mile.

About the Park: This 27 acre tract of wildlife habitat provides fishing and hunting for pheasants, rabbits and partridge.

CONTINUED ON PAGE 24

COPLEY-STROHBEHN PRESERVE

25450 U AVE (T-55), NORTHWEST OF REINBECK

Follow Highway 175 west of Reinbeck to U Avenue (T-55), then go north approximately one-tenth mile.

About the Park: This 12-acre area was a gift to the residents of Grundy County and since acquisition has had extensive tree and shrub planting.

GRUNDY COUNTY LAKE

16855 U AVE, SOUTH OF DIKE

Lake access: One-half mile south of Dike on U Ave (T-55).

Campground access: One-half mile south of Dike on U Avenue (T-55) to 170th Street (just past lake entrance), then go west one-half mile.

About the Park: This area is Grundy County's newest recreation area. The 40-acre lake was created by the Iowa Department of Transportation in 1999 when borrow material was needed for the construction of Highway 20. The DOT transferred the area to Grundy County by agreement upon completion of the highway project. The lake site was transferred to Grundy County in August, 2002. Additional property was purchased from the DOT using Resource Enhancement and Protection (REAP) grant funds making the total area 255-acres. Construction of the boat ramp and access drives around the lake began in 2002 and the park officially opened to the public in July, 2003. The park features a lake, nature trail, asphalt bike/hike trail and a modern campground with 60 electric-equipped sites, a playground and shower house.

HERBERT GUTKNECHT PARK

29851 DIAGONAL RD, NORTHWEST OF REINBECK

Follow Highway 175 northwest from Reinbeck one mile to the intersection of U Avenue (Highway T-55). Park is adjacent to the Pioneer Heritage Trail and the Oak Leaf Golf and Country Club.

About the Park: This one-acre park features five designated campsites. There is no charge for overnight camping. There is also hand-pumped running water, picnic tables and a shelter. The restroom is a pit type with handicapped accessibility. Adjoining the edge of the park is the Pioneer Trail. This park is an excellent stop when traveling and a popular place to view the fireworks coming from Reinbeck on the Fourth of July.

IDA M. MILLER MEMORIAL PARK

13945 240TH ST (HIGHWAY 175), BETWEEN GRUNDY CENTER AND EL-DORA

Follow Highway 175 west 8 1/2 miles from Grundy Center at the intersection of E Avenue, just west of intersection with County Road T-19.

About the Park: This two-acre rest stop has picnic tables, grills, shelter house, play structure and a handicapped accessible pit toilet. A large stone fitted with a bronze plaque tells that the park is named after Ida Miller, the first white child born in Melrose Township.

J.H. ROADMAN MEMORIAL PARK

28403 160TH ST, WEST OF DIKE

Follow 160th Street (D-19) west of Dike 1 1/2 miles. Park is on north side of road.

About the Park: This 10-acre roadside park is named in memory of J.H. Roadman and contains two small fishing ponds. Facilities found there include picnic tables and grilles, pit toilets, playground equipment and a shelter with electricity. The shelter house is available for advance reservations by calling the conservation board offices. The trails include a self-guided interpretive trail with brochures available in the shelter house and another walking trail. Each trail goes around its own pond. These trails provide a pleasant way to stretch your legs after traveling any distance. Overnight camping is allowed in the parking area.

REINBECK GREENBELT AREA

99 N GREENBELT RD, REINBECK

In Reinbeck on Highway 175, turn north on Commercial Street and turn left on North Greenbelt Road.

About the Park: This 67-acre portion of the Greenbelt provides camping, fishing, hunting for pheasants, rabbits and partridge. It also has space available for snowmobiling, hiking, equestrian trails and a horse riding arena. Also present are 25-, 50- and 100-yard shooting ranges and a field archery range.

SHEARN MEMORIAL PARK

24125 Q AVE, BETWEEN MORRISON AND GRUNDY CENTER

Between Grundy Center and Morrison at intersection of Diagonal Road (Highway 175) and Q Avenue (T-47).

About the Park: This half-acre rest stop contains picnic tables, grills, water, toilets and a shelter house.

STOEHR FISHING AREA

21300 H AVE, WEST OF HOLLAND

Travel west from Holland four miles on 205th Street (D-35) to H Avenue, then turn south and travel one mile.

About the Park: On this five-acre area you will find two spring-fed fishing ponds that are about one-acre each in size. Facilities here include a shelter house with electricity, picnic tables, pit-style toilets and a fishing pier – all are handicapped accessible. Grills are available for cooking out. The area also allows overnight camping. Fish species stocked in the ponds include channel catfish, large mouth bass and bluegill.

WOLF CREEK RECREATION AREA

33999 M AVE, EAST OF BEAMAN

Travel east from Beaman on 330th Street and then turn south on M Avenue.

About the Park: This is a 93-acre multi-purpose recreation area. It provides picnicking, camping, hiking, hunting for rabbits and pheasants and fishing in Wolf Creek. Facilities available include a shelter house with electricity, water, picnic tables, grills, pit type toilets and a composite playground structure.

WOLFE FAMILY PRESERVE

24511 DIAGONAL RD, EAST OF GRUNDY CENTER

Travel east from Grundy Center on Diagonal Rd (Highway 175) one mile to park.

About the Park: This 19-acre tract of land was a gift to the residents of Grundy County. The Pioneer Trail winds through the stately Bur Oak Trees and past the man-made wetland here.

GRUNDY CENTER FAMILY AQUATIC CENTER



MOVIE THEATER

CENTER THEATRE

602 7TH ST,
GRUNDY CENTER
319-824-6571

www.grundycentertheatre.org

Two digital screens, First-run movies

AQUATIC CENTERS

**CONRAD FAMILY
AQUATIC CENTER**
611 NORTH MAIN
641-366-2151

**REINBECK FAMILY
AQUATIC CENTER**
ELMWOOD PARK
319-788-2094

DIKE SWIMMING POOL
255 7TH ST
319-989-2443

**WELLSBURG
MUNICIPAL POOL**
102 MCADOO ST
641-869-5204

**GRUNDY CENTER
AQUATIC CENTER**
LIBERTY PARK
605 12TH ST
319-825-5200

BOWLING ALLEY

CRYSTAL BOWL
106 G AVENUE, GRUNDY CENTER
319-825-6314
Open August-April



GOLF COURSES

FOX RIDGE GOLF CLUB 355 COUNTRY CLUB LN, DIKE

Course type: Public
(Memberships available)
Holes: Eighteen (Par 72)
Yardages: 6,809 (Back tees)
Highlights: Grundy County's only public course and only 18-hole golf course.

OAK LEAF COUNTRY CLUB 29725 DIAGONAL RD, WEST OF REINBECK

FITNESS CENTERS

THE DEN 668 MAIN ST, DIKE 319-404-7844

Fitness Center, Classes,
Massage Therapy

GRUNDY FAMILY YMCA 102 E G AVE, GRUNDY CENTER 319-825-6210

Fitness Center, Classes

JILL FISCUS CENTER 610 CENTER ST, CONRAD LOCATED INSIDE BCLUW HIGH SCHOOL 641-366-2810

REINBECK FITNESS CENTER 414 MAIN ST, REINBECK LOCATED INSIDE REINBECK CITY HALL 319-788-6404

Course type: Private
Holes: Nine (Par 35)
Yardages: 2,999 (Back tees); 2,732 (Forward tees)
Highlights – Opened in 1954, course features rolling hills and tall, mature trees.

OAKWOOD GOLF COURSE 130 OAKWOOD DR, CONRAD

Course type: Semi-private
Holes: Nine (Par 35).
Yardages: 2,966 (Back tees); 2,646 (Forward Tees)
Highlights: Picturesque course with narrow fairways and water in play on several holes.



TOWN AND COUNTRY GOLF CLUB 1501 12TH ST, GRUNDY CENTER

Course type: Semi-private
Holes: Nine (Par 36)
Yardages: 3,337 (Back tees); 2,643 (Forward tees)
Highlights: Built in 1970 on rolling terrain, course features small ponds and creeks that come into play on several holes.

MEADOWBROOK GOLF COURSE 51 WEST FIFTH STREET, WELLSBURG

Course type: Semi-private
Holes: Nine (Par 35)
Yardages: 2,671 (Back tees); 2,374 (Forward tees)
Highlights: Opened in 1963. Rolling terrain with wide, tree-lined fairways and sand bunkers on most holes. Greens are flat and generally slow.



BEAMAN COMMUNITY MEMORIAL LIBRARY

223 Main St, Beaman
Hours: M-F: 2 - 6 p.m.; Sat: 10 a.m. - Noon
641-366-2912
www.beaman.lib.ia.us

KLING MEMORIAL LIBRARY

708 Seventh St, Grundy Center
Hours: M-W-F: 10 a.m. - 5 p.m.; T-Th: 10 a.m. - 7 p.m.; Sat: 10 a.m. - Noon
319-825-3607
www.grundycenter.lib.ia.us

CONRAD PUBLIC LIBRARY

114 North Main, Conrad
Hours (subject to change): M-W: 9 a.m.-8 p.m.; T-Th: 2 p.m.-8 p.m.; Sat: 9 a.m.-Noon
641-366-2583
www.conrad.lib.ia.us

DIKE PUBLIC LIBRARY

133 East Elder St, Dike
Hours: M: 10 a.m.-6 p.m.; W: Noon-8 p.m.; T-Th-F: 10 a.m.-5 p.m.; Sat: 9 a.m.-Noon
319-989-2608
www.dike.lib.ia.us

REINBECK PUBLIC LIBRARY

501 Clark St., Reinbeck
Hours: M, Tu, Th: 11 a.m.-5 p.m.; W: 11 a.m.-6 p.m.; F: 10 a.m.-5 p.m.; Sat: 10 a.m.-2 p.m.
319-788-2652
www.reinbeck.lib.ia.us

WELLSBURG PUBLIC LIBRARY

411 N. Adams St, Wellsburg
Hours: T-W-F: 10 a.m.-5 p.m.; Th: 10 a.m.-7 p.m.; Sat: 10 a.m.-Noon
641-869-5234
www.wellsburg.lib.ia.us



Grundy County is nestled on the western border of The Cedar Valley Region of Iowa. At the region's core is the Waterloo/Cedar Falls metro area, only minutes away. The Cedar Valley is a great place, home to over a quarter million people, with amazing opportunities. Included in this six-county area are diverse college and university cities, trendy historic downtowns and idyllic small towns where grain elevators are the tallest buildings for miles.

The Cedar Valley is growing, with hundreds of career opportunities in dozens of industries, including healthcare, software development, manufacturing, and countless others. Where will you make your mark? Learn more at livethevalley.com/jobs. Many of the K-12 institutions have created programs that provide students opportunities for career exploration and soft skills development. Our nightlife and entertainment options are just the ticket! Small downtown bars and restaurants, microbreweries, beer halls, and more are sprinkled across our region. Enjoy

live music from small local stages, to grand performance halls and concert venues that regularly host national touring acts from a diverse range of music styles. You will also see performing arts such as plays, musicals, and more. The Cedar Valley is home to a host of history museums, art exhibits, and the Waterloo-Cedar Falls Symphony.

Sports fans have found their place! With a host of semi-pro, NCAA, and youth sporting events, you are sure to find something here! Head out to Party Town at Young Arena in Waterloo throughout the winter to catch the Waterloo Black Hawks, our local USHL hockey team, rockin' the rink. Home to the University of Northern Iowa, NCAA sports fans can catch our UNI Panthers in action. The UNI Football team is a Division I FCS powerhouse consistently ranked in the Top 25 that competes in the UNI-Dome throughout the fall. The UNI Men's & Women's Basketball teams take it to the court in the McLeod Center November through March in their quest for a bid to the NCAA Basketball Tournament.

Come "Live The Valley" in Grundy County, and the entire Cedar Valley Region of Iowa!

LOCATION

LOCATION

LOCATION



Is an expansion or relocation in your company's future?
Location plays a key role in efficiently getting your product to market.
Butler County is in one of the Midwest's fastest growing logistics corridors.

THE ADVANTAGES...

- Access to major 4-lane highway corridor. I-380, I-35, Hwy 218 & Hwy 20
- Shovel ready Industrial Parks throughout Butler & Grundy Counties
- Locally owned railroad offering flexible connections to all U.S. markets
- Workforce training and development programs
- Labor force draw of over 200,000 in the Cedar Valley Region
- Confidential site selection assistance
- Financial assistance programs
- Small Business Financial Assistance Programs"



Jeff Kolb
Executive Director

Email: info@butlergrundy.com
Phone: (319) 267-2858

422 North Main
Allison, Iowa 50602